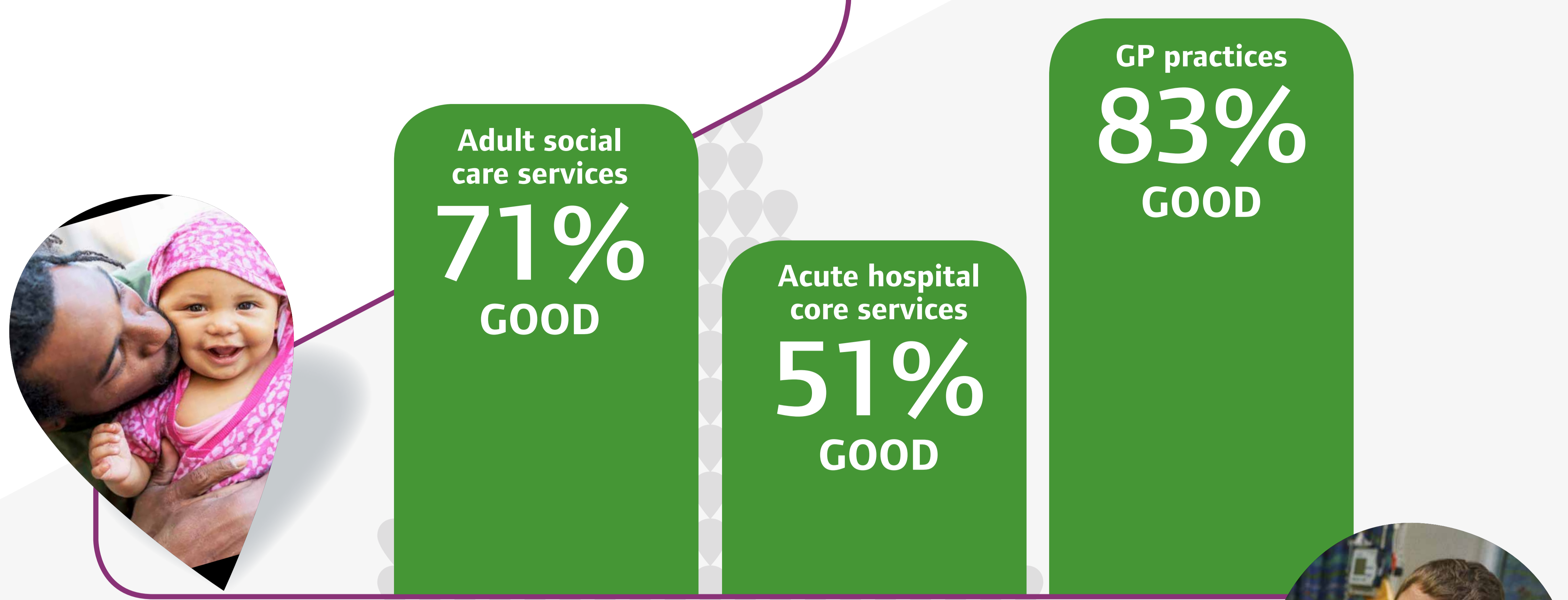
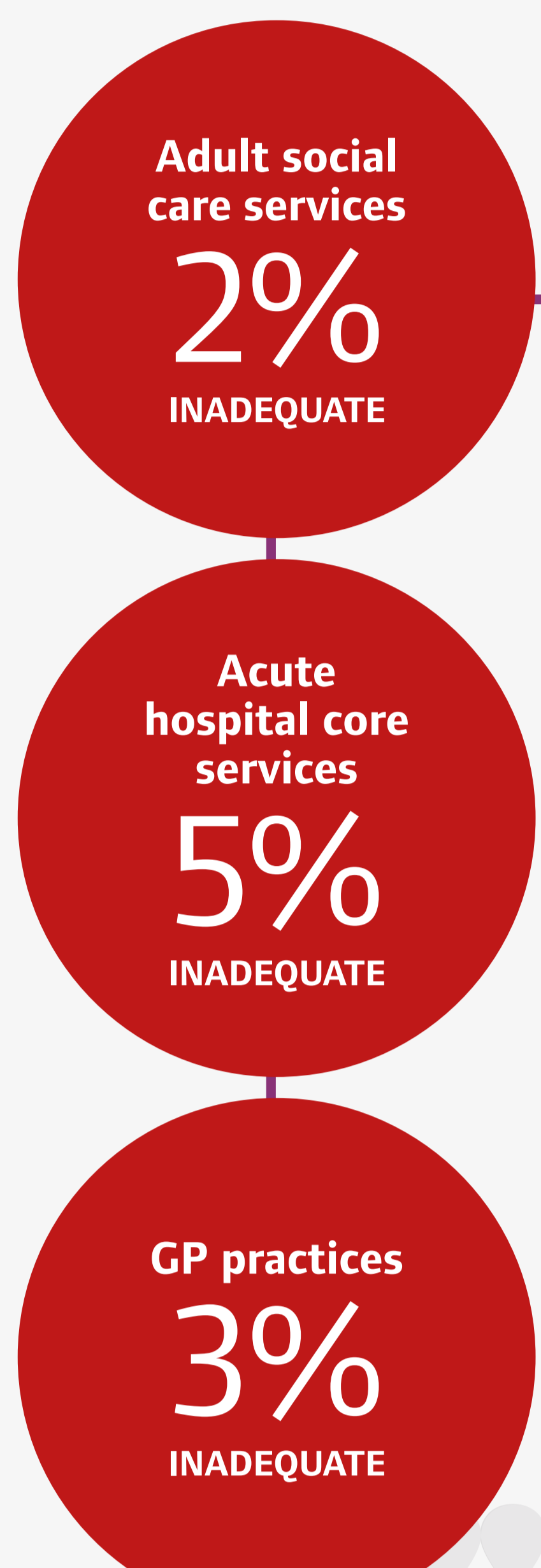


STATE OF CARE

Variation in care quality 2015/16



Most services are providing people with **GOOD** care...



but we still see poor care



Leadership is important for improving care

Ratings data as at 31 July 2016



There are fewer care homes than before and the sector is fragile



More demand on the system

500,000 more people in A&E in 2015/16 than 2014/15



We have concerns over future

QUALITY

Is it sustainable?



The answer lies in **collaboration** of local services

STATE OF CARE